

KURBELGEHAEUSE, GETRIEBELAGER, WASSERPUMPE
 CRANKCASE, GEAR BEARINGS, WATER PUMP
 CARTER MOTORE, CUSCINETTI TRASMISSIONE, POMPA ACQUA

BILD-NR. ILL. NO. FIG.	TEILE-NR. PART NO. CODICE	B E Z E I C H N U N G D E S C R I P T I O N D E S C R I Z I O N E	STUECK QTY. QTA.
1 - 5	293 851	GEHAEUSE KPL. CRANKCASE ASSY., GRAY METALLIC CARTER MOTDRE CPL., GRIGIO METAL..... GRAU METALLIC	1
2	237 900	ZWISCHENRADACHSE / IDLE GEAR SHAFT ALBERO LIBERO.....	1
3	224 260	ZULAUFROHR / TUBE / TUBO.....	1
4	232 275	NADELHUELSE 8X12X8 NEEDLE BUSHING 8X12X8 GABBIA A RULLI 8X12X8.....	1
5	229 290	ZYLINDERSTIFT 8 KLEIN M6X16 LOCATING PIN 8X16 / SPINA 8X16.....	2
6	230 425	WD-RING AS 28X38X7 NBR / OIL SEAL 28X38X7 PARAOLIO 28X38X7..... FUER KURBELWELLE FOR CRANKSHAFT PER ALBERO MOTORE	2
7	930 675	WD-RING AS 25X38X7 NBR / OIL SEAL 25X38X7 PARAOLIO 25X38X7..... FUER HAUPTWELLE FOR MAIN SHAFT PER ALBERO SECONDARIO	1
8	232 766	RK-LAGER 6205 TNH BALL BEARING 6205 TNH / 25-52-15 CUSCINETTO 6205 TNH / 25-52-15..... 25-52-15, FUER HAUPTWELLE MAGNETSEITIG UND VORGELEGEWELLE KUPPLUNGSSEITIG FOR MAIN SHAFT MAGNETO SIDE AND CLUTCH SHAFT CLUTCH SIDE PER ALBERO SECONDARIO LATO MAGNETE E ALBERO PRIMARIO LATO FRIZIONE	2
9	932 032	RK-LAGER 6203 TVH C3 BALL BEARING 6203TVH C3, 17-40-12 CUSCINETTO 6203 TVH C3, 17-40-12..... 17-40-12, FUER HAUPTWELLE KUPPLUNGSSEITIG UND VORGELEGEWELLE MAGNETSEITIG FOR MAIN SHAFT CLUTCH SIDE AND CLUTCH SHAFT MAGNETO SIDE PER ALBERO SECONDARIO LATO FRIZIONE E ALBERO PRIMARIO LATO MAGNETE	2

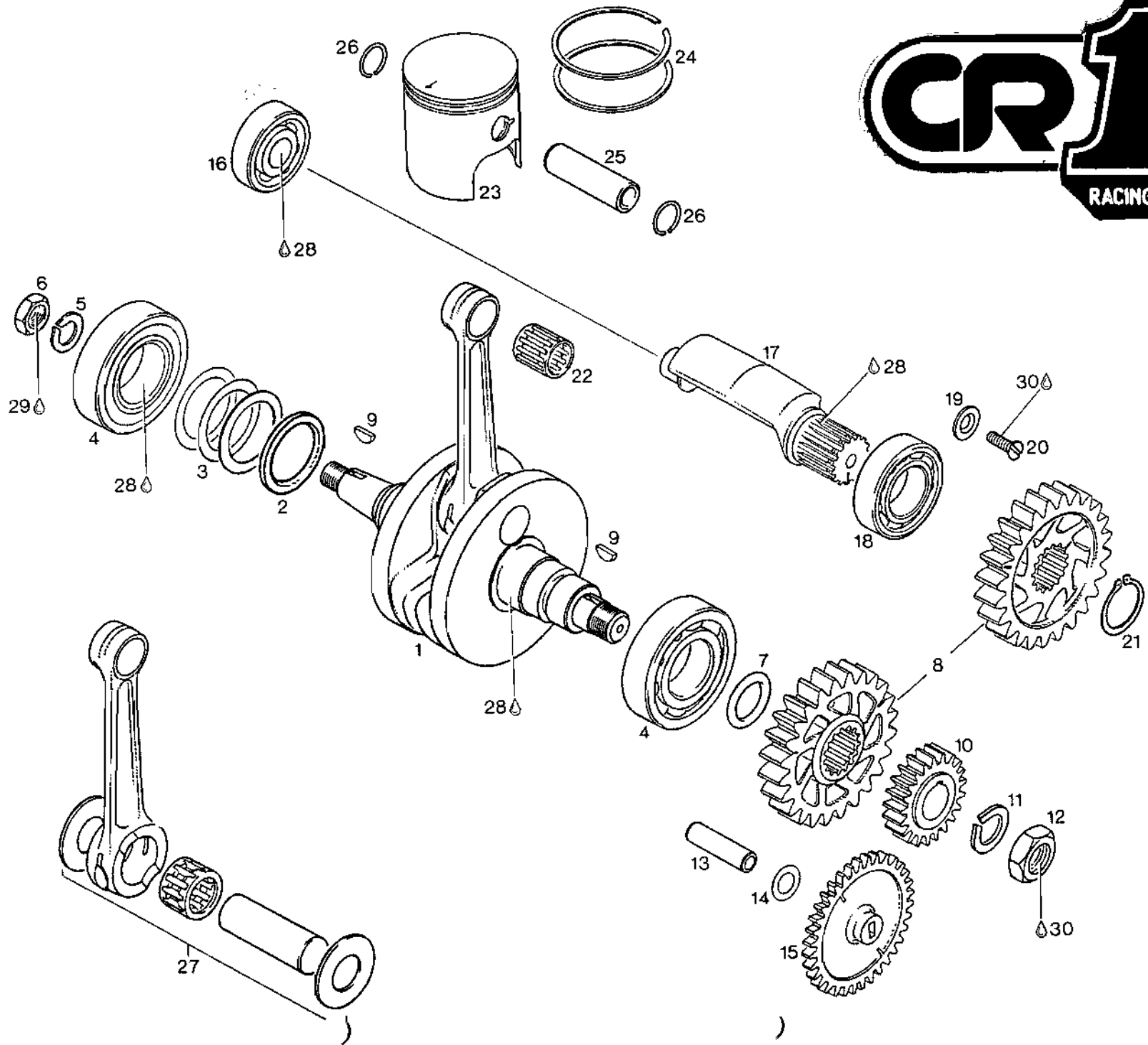
BILD-NR. ILL. NO. FIG.	TEILE-NR. PART NO. CODICE	B E Z E I C H N U N G D E S C R I P T I O N D E S C R I Z I O N E	STUECK QTY. QTA.
10	232 290	RK-LAGER 6302 C3 BALL BEARING 6302 C3 / 15-42-13 CUSCINETTO 6302 C3 / 15-42-13..... 15-42-13, FUER AUSGLEICHSWELLE FOR BALANCE SHAFT PER CONTRALBERO	1
11	250 (410) 417	DICHTUNG / GASKET / GUARNIZIONE.....	1
12	945 751	FEDERRING DIN 128-A6-FST / LOCK WASHER A6 RONDELLA SPACCATA A6.....	13
13	241 821	ZYL.SCHRAUBE M6X45 DIN 912 ALLEN SCREW M6X45 / BRUGOLA M6X45.....	10
14	241 261	ZYL.SCHRAUBE M6X65 DIN 912 ALLEN SCREW M6X65 / BRUGOLA M6X65.....	3
15	950 141	DICHTRING A 8X13 DIN 7603 GASKET RING A8X13 RONDELLA GUARNIZIONE A8X13.....	2
16	841 561	ZYL.SCHRAUBE M8X45 DIN 912 ALLEN SCREW M8X45 / BRUGOLA M8X45.....	1
17	427 421	PASSSCHEIBE 42X52X0,3 DIN 988 SHIM 42X52X0,3 SPESSORE 42X52X0,3..... FUER VORGELEGEWELLE FOR CLUTCH SHAFT PER ALBERO PRIMARIO	N BED AS REQ A RICH
17	427 422	PASSSCHEIBE 42X52X0,1 DIN 988 SHIM 42X52X0,1 SPESSORE 42X52X0,1..... FUER VORGELEGEWELLE FOR CLUTCH SHAFT PER ALBERO PRIMARIO	N BED AS REQ A RICH
18	227 520	AUSGLEICHSCHIEBE 34/39,5/0,5 SHIM 34/39,5/0,5 SPESSORE 34/39,5/0,5..... FUER HAUPTWELLE FOR MAIN SHAFT PER ALBERO SECONDARIO	N BED AS REQ A RICH
18	227 521	AUSGLEICHSCHIEBE 34/39,5/0,3 SHIM 34/39,5/0,3 SPESSORE 34/39,5/0,3..... FUER HAUPTWELLE FOR MAIN SHAFT PER ALBERO SECONDARIO	N BED AS REQ A RICH

BILD-NR. ILL. NO. FIG.	TEILE-NR. PART NO. CODICE	B E Z E I C H N U N G D E S C R I P T I O N D E S C R I Z I O N E	STUECK QTY. QTA.
18	227 522	AUSGLEICHSCHIEBE 34/39,5/0,1 SHIM 34/39,5/0,1 SPESSORE 34/39,5/0,1..... FUER HAUPTWELLE FOR MAIN SHAFT PER ALBERO SECONDARIO	N BED AS REQ A RICH
19	227 260	HALTEBLECH / RETAINING PLATE PIASTRA FISSAGGIO CUSCINETTI.....	1
20	940 315	SENKSCRAUBE M5X12 DIN 963 COUNTERSUNK SCREW M5X12 / VITE M5X12.....	5
21 - 29	293 415	WASSERPUMPE KPL. / WATER PUMP ASSY. POMPA ACQUA CPL.....	1
21	222 180	WASSERPUMPENGEHAEUSE / WATER PUMP HOUSING CORPO POMPA ACQUA.....	1
22	230 195	WD-RING A 10X26X7 NBR / OIL SEAL 10X26X7 PARAOLIO 10X26X7.....	2
23	237 910	PUMPENWELLE / PUMP SHAFT / ALBERO POMPA..	1
24	232 730	NADELROLLE 4X15,8 G3 DIN 5402 NEEDLE PIN 4X15,8 / PERNO 4X15,8.....	1
25	234 410	PUMPENRITZEL 14 Z / PUMP GEAR 14 T., INGRANAGGIO POMPA 14 D.,.....	1
26	827 590	ANLAUFSCHIEBE 10,1/17/1 THRUST WASHER 10,1/17/1 RASAMENTO 10,1/17/1.....	1
27	222 190	LAUFRAD / IMPELLER / GIRANTE.....	1
28	229 280	SPANNHUELSE 4X16 DIN 1481 SLOTTED SPRING PIN 4X16 / SPINA 4X16.....	1
29	430 060	O-RING 26,7-1,8 NBR 70-80 SH O-RING 26,7-1,8 / ANELLO OR 26,7-1,8.....	2
30	241 270	TAPTITE-SCHRAUBE M5X25 TAPTITE-SCREW M5X25 / VITE TAPTITE M5X25.	1
31	241 777	AUSRUECKSCHRAUBE M12 / HEX.SCREW M12 VITE M12..... NUR FUER AUSFUEHRUNG MIT KICKSTARTER FOR CONFIGURATION WITH KICK START ONLY PER ESECUZIONE M / M	1
32	241 401	SK-SCHRAUBE M12X12 / HEX.SCREW M12X12 VITE ESAGONALE M12X12.....	1

BILD-NR. ILL. NO. FIG.	TEILE-NR. PART NO. CODICE	B E Z E I C H N U N G D E S C R I P T I O N D E S C R I Z I O N E	STUECK QTY. QTA.
33	250 641	DICHTRING A 12X18 DIN 7603 GASKET RING A12X18 ANELLO GUARNIZIONE A12X18.....	2
34	241 781	MAGNETSCHRAUBE M12X1,5 MAGNETIC DRAIN PLUG M12X1,5 VITE MAGNETICA M12X1,5.....	1
35	440 191	ZYL.SCHRAUBE M8X16 DIN 912 ALLEN SCREW M8X16 / BRUGOLA M8X16.....	1
36	840 371	ZYL.SCHRAUBE M6X11,5 ALLEN SCREW M6X11,5 / BRUGOLA M6X11,5.....	1
37	227 500	DICHTRING 6,2/12/1 / GASKET RING 6,2/12/1 RONDELLA GUARNIZIONE 6,2/12/1.....	1
38	230 400	O-RING 18-1,5 NBR 70-80 SH O-RING 18-1,5 / ANELLO OR 18-1,5.....	1
39	241 925	ENTLUEFTERSCHRAUBE M18X1,5 AIR VENT SCREW M18X1,5 TAPPO SFIATO M18X1,5.....	1
40	241 850	KONTAKTSCHRAUBE M10 KPL. CONTACT SCREW M10 ASSY., VITE CONTATTO M10 CPL.,.....	1
41	227 320	VERSCHLUSSDECKEL / CLOSING COVER COPERCHIO..... FUER AUSFUEHRUNG KICKSTARTER FOR CONFIGURATION KICK START PER ESECUZIONE M/M A PEDALE	1
42	945 751	FEDERRING DIN 128-A6-FST / LOCK WASHER A6 RONDELLA SPACCATA A6..... FUER AUSFUEHRUNG KICKSTARTER FOR CONFIGURATION KICK START PER ESECUZIONE M/M A PEDALE	2
43	241 930	ZYL.SCHRAUBE M6X20 DIN 912 ALLEN SCREW M6X20 / BRUGOLA M6X20..... FUER AUSFUEHRUNG KICKSTARTER FOR CONFIGURATION KICK START PER M/M A PEDALE	2
44	840 836	STIFTSCHRAUBE M8X26/20 / STUD M8X26/20 PRIGIONIERO M8X26/20.....	2
45	940 786	STIFTSCHRAUBE M8X57/20 / STUD M8X57/20 PRIGIONIERO M8X57/20.....	2
46	229 290	ZYLINDERSTIFT 8 KLEIN M6X16 LOCATING PIN 8X16 / SPINA 8X16.....	2

BILD-NR. ILL. NO. FIG.	TEILE-NR. PART NO. CODICE	B E Z E I C H N U N G D E S C R I P T I O N D E S C R I Z I O N E	STUECK QTY. QTA.
47	247 555	BUNDBUECHSE / SLEEVE / BUSSOLA.....	2
48	897 161	MOLYKOTE 111 MOLYKOTE 111, 100 GR., MOLYKOTE 111, 100 GR.,..... SILIKONFETT, 100 GR., SILICONE GREASE GRASSO SILICONE	N BED AS REQ A RICH
49	899 788	LOCTITE 648 GRUEN LOCTITE 648 GREEN 5 GR., LOCTITE 648 VERDE, 5 GR.,..... SCHRAUBENSICHERUNG HOCHFEST, 5 GR., HIGH STRENGTH BOND PASTA FISSAGGIO VITI, FORTE	N BED AS REQ A RICH
50	899 785	SCHRAUBENSICHERUNG NIEDRIGFEST LOCTITE 221 VIOLET 10 CC., LOCTITE 221 VIOLETTO, 10 CC.,..... LOCTITE 221 VIOLETT, 10 CCM., LOW STRENGTH BOND PASTA FISSAGGIO VITI, DEBOLE	N BED AS REQ A RICH





KURBELWELLE, AUSGLEICHSTRIEB, KOLBEN
 CRANKSHAFT, BALANCER DRIVE, PISTON
 ALBERO MOTORE, CONGEGNO PER CONTRALBERO, PISTONE

BILD-NR. ILL. NO. FIG.	TEILE-NR. PART NO. CODICE	B E Z E I C H N U N G D E S C R I P T I O N D E S C R I Z I O N E	STUECK QTY. QTA.
1	N 293 846	KURBELWELLE KPL. / CRANKSHAFT ASSY., ALBERO MOTORE CPL..... HUB 54,5 MM STROKE 54,5 MM CORSA 54,5 MM	1
2	827 410	RADIUSSCHEIBE 30,8/39,5/1 DISTANCE RING 30,8/39,5/1 DISTANZIALE 30,8/39,5/1.....	1
3	944 582	AUSGLEICHSCHEIBE 30,4/40,5/0,3 SHIM 30,4/40,5/0,3 SPESSORE 30,4/40,5/0,3.....	N BED AS REQ A RICH
3	944 583	AUSGLEICHSCHEIBE 30,4/40,5/0,1 SHIM 30,4/40,5/0,1 SPESSORE 30,4/40,5/0,1.....	N BED AS REQ A RICH
3	944 584	AUSGLEICHSCHEIBE 30,4/40,5/0,5 SHIM 30,4/40,5/0,5 SPESSORE 30,4/40,5/0,5.....	N BED AS REQ A RICH
3	944 586	AUSGLEICHSCHEIBE 30,4/40,5/0,2 SHIM 30,4/40,5/0,2 SPESSORE 30,4/40,5/0,2.....	N BED AS REQ A RICH
4	932 588	RK-LAGER 6206 TNH C4 BALL BEARING 6206 TNHC4 30-62-16 CUSCINETTO 6206 TNH C4 30-62-16.....	2
5	945 754	FEDERRING DIN 128-A12-FST LOCK WASHER A12 / RONDELLA SPACCATA A12..	1
6	642 051	SK-MUTTER M12X1 HOEHE 6 / HEX. NUT M12X1 DADO M12X1..... ANZUGSDREHMOMENT 70 NM TIGHTENING TORQUE 70 NM COPPIA DI SERRAGGIO 70 NM	1
7	430 460	O-RING 18-3,5 NBR 70-80 SH O-RING 18-3,5 / ANELLO OR 18-3,5.....	1
8	234 430	AUSGLEICHSRAD 27 Z / BALANCE GEAR 27 T., INGRAN. COMANDO CONTRALBERO 27 D.....	2
9	246 050	SCHEIBENFEDER 3X3,7 DIN 6888 WOODRUFF KEY 3X3,7 / LINGUETTA 3X3,7.....	2

BILD-NR. ILL. NO. FIG.	TEILE-NR. PART NO. CODICE	B E Z E I C H N U N G D E S C R I P T I O N D E S C R I Z I O N E	STUECK QTY. QTA.
10	293 925	PRIMAERTRIEB KPL. / PRIMARY DRIVE ASSY., TRASMISSIONE PRIMARIA CPL.,..... NUR ANTRIEBSRAD MIT KUPPLUNGSKORB KPL. GEMEINSAM AUSTAUSCHEN. REPLACE ONLY DRIVE GEAR WITH CLUTCH DRUM ASSY. CAMBIARE SOLO L'INGRANAGGIO E LA CAMPANA FRIZIONE INSIEME	1
11	945 756	SPERRKANTRING 16 DIN 128 A LOCK WASHER 16 / RONDELLA SPACCATA 16....	1
12	242 570	SK-MUTTER BM16X1,5 DIN 439 HEX. NUT M 16X1,5 / DADO M 16X1,5..... ANZUGSDREHMOMENT 70 NM TIGHTENING TORQUE 70 NM COPPIA DI SERRAGGIO 70 NM	1
13	237 900	ZWISCHENRADACHSE / IDLE GEAR SHAFT ALBERO LIBERO.....	1
14	827 590	ANLAUFSCHEIBE 10,1/17/1 THRUST WASHER 10,1/17/1 RASAMENTO 10,1/17/1.....	1
15	234 405	ZWISCHENRAD 34/13 Z / IDLE GEAR 34/13 T., INGRANAGGIO INTERMEDIO 34/13 D.,..... FUER WASSERPUMPE FOR WATER PUMP PER POMPA ACQUA	1
16	232 290	RK-LAGER 6302 C3 BALL BEARING 6302 C3 / 15-42-13 CUSCINETTO 6302 C3 / 15-42-13..... 15-42-13, FUER AUSGLEICHSWELLE MAGNETSEITIG FOR BALANCE SHAFT MAGNETO SIDE PER CONTRALBERO LATO MAGNETE	N BED AS REQ A RICH
17	237 940	AUSGLEICHSWELLE / BALANCE SHAFT CONTRALBERO.....	1
18	232 340	RK-LAGER 6005 E TNH C3 BALL BEARING 6005 E C3/ 25-47-12 CUSCINETTO 6005 E C3 / 25-47-12..... 25-47-12, FUER AUSGLEICHSWELLE KUPPLUNGSSEITIG FOR BALANCE SHAFT CLUTCH SIDE PER CONTRALBERO LATO FRIZIONE	1
19	227 280	HALTESCHEIBE / THRUST WASHER / RASAMENTO.	1
20	940 315	SENKSCHRAUBE M5X12 DIN 963 COUNTERSUNK SCREW M5X12 / VITE M5X12.....	1
21	945 810	SICHERUNGSRING 25X1,2 DIN 471 CIRCLIP 25X1,2 / ANELLO SICUREZZA 25X1,2.	1

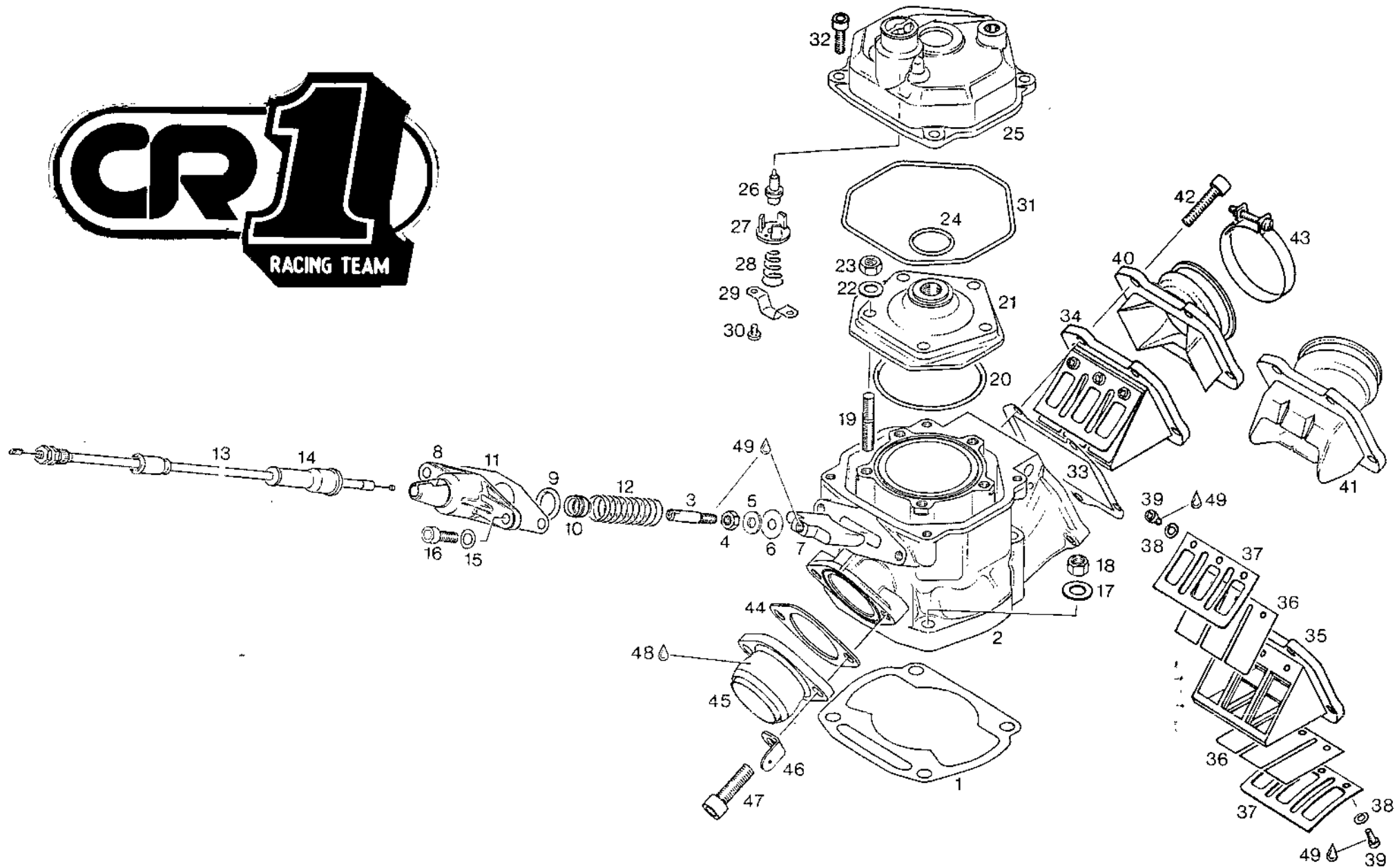
BILD-NR. ILL. NO. FIG.	TEILE-NR. PART NO. CODICE	B E Z E I C H N U N G D E S C R I P T I O N D E S C R I Z I O N E	STUECK QTY. QTA.
22	932 028	KOLBENBOLZENKAEFIG K 15X19X20 NEEDLE CAGE K 15X19X20 GABBIA A RULLI 15X19X20.....	1
23 - 24	N (294 430) (293 650) 294742 *	KOLBEN KPL. 53,98/53,99 MM PISTON ASSY. 53,98/53,99 MM PISTONE CPL. 53,98/53,99 MM.....	1
24	215 560	R-RING 54X1X2,3 RECTANGULAR RING 54X1X2,3 SEGMENTO R 54X1X2,3.....	2
25	216 (130) 136	KOLBENBOLZEN 15X10X45,6 PISTON PIN 15X10X45,6 SPINOTTO 15X10X45,6.....	1
26	945 635	NULLHAKENRING 15 / CIRCLIP 15 ANELLINO 15..... NUR 1 X VERWENDBAR USE ONLY ONCE USARE SOLO UNA VOLTA	2
27	N 293 849	KURBELWELLENSATZ / CRANKSHAFT REPAIR KIT GRUPPO BIELLA.....	1
28	297 431	LOCTITE ANTI-SEIZE 76710 LOCTITE ANTI-SEIZE 10 GR., LOCTITE ANTI-SEIZE 10 GR.,..... ZUR VERHINDERUNG VON PASSUNGSROST, 10 GR., TO PREVENT METAL GALLING PER EVITARE CORROSIONE	N BED AS REQ A RICH
29	899 788	LOCTITE 648 GRUEN LOCTITE 648 GREEN 5 GR., LOCTITE 648 VERDE, 5 GR.,..... SCHRAUBENSICHERUNG HOCHFEST, 5 GR., HIGH STRENGTH BOND PASTA FISSAGGIO VITI, FORTE	N BED AS REQ A RICH
30	899 785	SCHRAUBENSICHERUNG NIEDRIGFEST LOCTITE 221 VIOLET 10 CC., LOCTITE 221 VIOLETTO, 10 CC.,..... LOCTITE 221 VIOLETT, 10 CCM., LOW STRENGTH BOND PASTA FISSAGGIO VITI, DEBOLE	N BED AS REQ A RICH

* 293566 PISTONE ϕ 54



CENTRO RICAMBI SRL

via CIMABUE, 24/A - 50121 FIRENZE (ITALY)
TEL. (+39) 055-66 64 23 - FAX (+39) 055-67 00 84
e-mail: cr1firenze@tiscali.it



ZYLINDER, AUSPUFFSCHIEBER, ZYLINDERKOPFDECKEL
THERMOSTAT, ANSAUGSTUTZEN
CYLINDER, EXHAUST VALVE, CYLINDER HEAD COVER
THERMOSTAT, INTAKE SOCKET
CILINDRO, VALVOLA SCARICO, COPERCHIO TESTA CILINDRO
THERMOSTATO, FLANGIA CARBURATORE

BILD-NR. ILL. NO. FIG.	TEILE-NR. PART NO. CODICE	B E Z E I C H N U N G D E S C R I P T I O N D E S C R I Z I O N E	STUECK QTY. QTA.
1	(250 260) 650090	DICHTUNG 0,3 GASKET 0,3 MM GUARNIZIONE 0,3 MM.....	N BED AS REQ A RICH
1	(250 261) 650091	DICHTUNG 0,5 GASKET 0,5 MM GUARNIZIONE 0,5 MM.....	N BED AS REQ A RICH
2	(223 364) 223 368	ZYLINDER KPL. RAVE E CYLINDER RAVE E ASSY. CILINDRO RAVE E CPL..... <i>NUDO</i> GRAU METALLIC GRAY METALLIC GRIGIO METALLIZZATO	1
3	253 470	SCHIEBERSTANGE / VALVE ROD / ASTA VALVOLA	1
4	242 210	SK-MUTTER M6 DIN 934 / HEX. NUT M6 DADO ESAGONALE M6	1
5	244 211	SCHEIBE 6,4 DIN 134 / WASHER 6,4 RONDELLA 6,4.....	1
6	827 307	SCHEIBE 6,2/18/0,5 / WASHER 6,2/18/0,5 RONDELLA 6,2/18/0,5.....	1
7	253 370	AUSLASSSCHIEBER 54 MM EXHAUST VALVE 54 MM / GHIGLIOTTINA 54 MM.	1
8	253 460	SCHIEBERSTANGENFUEHRUNG VALVE ROD HOUSING / CORPO GUIDA VALVOLA..	1
9	831 500	O-RING 14-3 NBR 70-80 SH / O-RING 14-3 ANELLO OR 14-3.....	1
10	230 810	VENTILSCHAFTDICHTUNG / VALVE STEM SEAL PARAOILIO GUIDAVALVOLA.....	1
11	250 970	DICHTUNG / GASKET / GUARNIZIONE.....	1
12	239 050	DRUCKFEDER DM15,7 D1,2 L36,3 COMPRESSION SPRING 36,3 MM MOLLA 36,3 MM.....	1

BILD-NR. ILL. NO. FIG.	TEILE-NR. PART NO. CODICE	B E Z E I C H N U N G D E S C R I P T I O N D E S C R I Z I O N E	STUECK QTY. QTA.
13	297 740	RAVESEILZUG KPL. / EXHAUST VALVE CABLE CAVO BOWDEN RAVE ELETTRONICO.....	1
14	860 460	REGENSCHUTZKAPPE / PROTECTION CAP CAPPUCCIO GOMMA.....	1
15	845 020	FEDERSCHEIBE B6 DIN 137 SPRING WASHER B6 / RONDELLA ELASTICA.....	2
16	241 231	ZYL.SCHRAUBE M6X16 DIN 6912 ALLEN SCREW M6X16 / BRUGOLA M6X16.....	2
17	250 311	SCHEIBE 8,4 DIN 125 / WASHER 8,4 RONDELLA 8,4.....	4
18	942 671	SK-MUTTER M8 SW 11 / HEX. NUT M8 DADO ESAGONALE M8..... ANZUGSDREHMOMENT 30 NM TIGHTENING TORQUE 30 NM (265 IN.LB.) COPPIA DI SERRAGGIO 30 NM	4
19	241 241	STIFTSCHRAUBE M7X20/22 / STUD M7X19/22 PRIGIONIERO M7X19/22.....	5
20	250 160	O-RING 64-2 FPM 70-80 SH / O-RING 64-2 ANELLO OR 64-2.....	1
21	223 381	BRENNRAUMEINSATZ / COMBUSTION CHAMBER INSERTO CAMERA COMBUSTIONE.....	1
22	227 571	SCHEIBE 7,4 DIN 125 / WASHER 7,4 RONDELLA 7,4.....	5
23	242 591	SK-MUTTER M7 DIN 934 / HEX. NUT M7 DADO M7..... AUSZUGSDREHMOMENT 20 NM TIGHTENING TORQUE 20 NM (175 IN.LB.) COPPIA DI SERRAGGIO 20 NM	5
24	430 782	O-RING 23,3-2,4 SI 60-70 SH O-RING 23,3-2,4 / ANELLO OR 23,3-2,4.....	1
25	223 396	ZYLINDERKOPFDECKEL / CYLINDER HEAD COVER COPERCHIO TESTA CILINDRO..... GRAU METALLIC GRAY METLLIC GRIGIO METALLIZZATO	1
26	222 125	THERMOSTAT 45 GRAD / THERMOSTAT 45 DEG. TERMOSTATO 45 GRADI.....	1
27	222 170	VENTILTELLER / THERMOSTAT HOLDER PORTATERMOSTATO.....	1
28	239 950	DRUCKFEDER / COMPRESSION SPRING / MOLLA..	1

BILD-NR. ILL. NO. FIG.	TEILE-NR. PART NO. CODICE	B E Z E I C H N U N G D E S C R I P T I O N D E S C R I Z I O N E	STUECK QTY. QTA.
29	222 200	THERMOSTATBUEGEL THERMOSTAT RETAINING BRACKET BRIDA TERMOSTATO.....	1
30	240 195	TAPTITE-SCHRAUBE M4X8 TAPTITE-SCREW M4X8 / VITE TAPTITE M4X8...	2
31	250 280	O-RING 105-2,5 NBR 70-80 SH O RING 105-2,5 / ANELLO OR 105-2,5.....	1
32	241 930	ZYL.SCHRAUBE M6X20 DIN 912 ALLEN SCREW M6X20 / BRUGOLA M6X20.....	4
33	250 520	DICHTUNG / GASKET / GUARNIZIONE.....	1
34 - 39	224 387	VENTILTRAEGER KPL. / REED VALVE ASSY., VALVOLA A LAMELLE CPL.,.....	1
35	 VENTILTRAEGER, NICHT ALS ERSATZTEIL LIEFERBAR VERWENDE VENTILTRAEGER KPL. 224 387 REED VALVE, NOT AVAILABLE AS SPARE PART USE REED VALVE ASSY. 224 387 PORTA VALVOLA, NON DISPONIBILI COME RICAMBIO ORDINARE PORTA VALVOLA CPL. 224 387	1
36	224 430	BLATTVENTIL / REED PETAL VALVOLA A LAMELLE.....	2
37	 VENTILTRAEGER, NICHT ALS ERSATZTEIL LIEFERBAR VERWENDE VENTILTRAEGER KPL. 224 387 REED VALVE, NOT AVAILABLE AS SPARE PART USE REED VALVE ASSY. 224 387 PORTA VALVOLA, NON DISPONIBILE COME RICAMBIO ORDINARE PORTA VALVOLA CPL. 224 387	2
38	945 758	FEDERRING DIN 128-A4-FST / LOCK WASHER A4 RONDELLA SPACCATA A4.....	6
39	940 235	ZYL.SCHRAUBE M4X8 DIN 84 SLOTTED HEAD SCREW M4X8 / VITE TONDA M4X8	6
40	267 912	VERGASERSTUTZEN 36 MM CARBURETOR FLANGE 36 MM FLANGIA CARBURATORE MM 36..... FUER MOTORTYPE 123 S T R A D A FOR ENGINE TYPE 123 S T R A D A PER MOTORE TIPO 123 S T R A D A	1

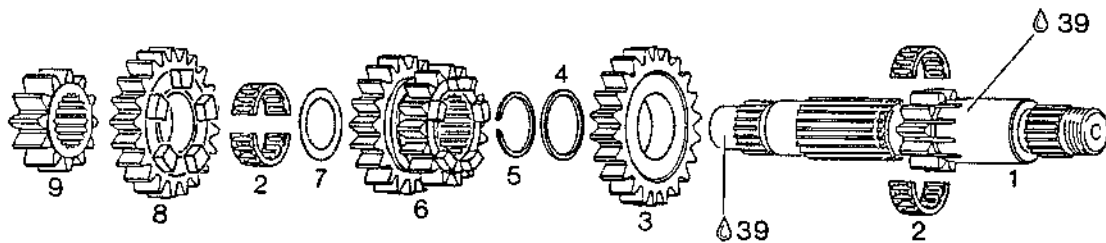
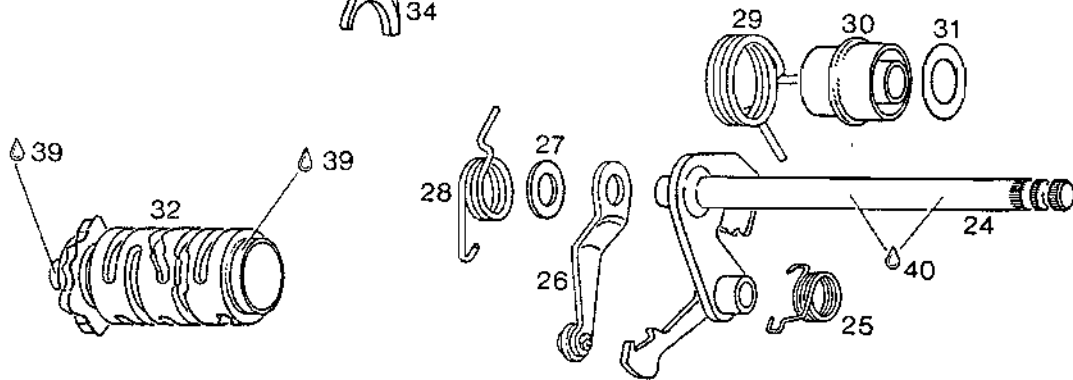
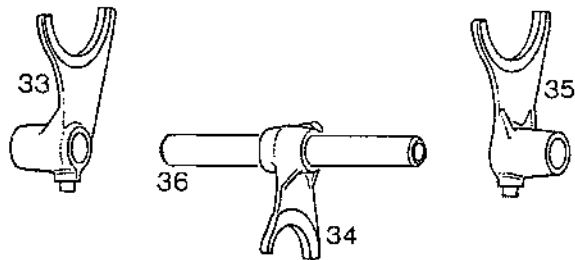
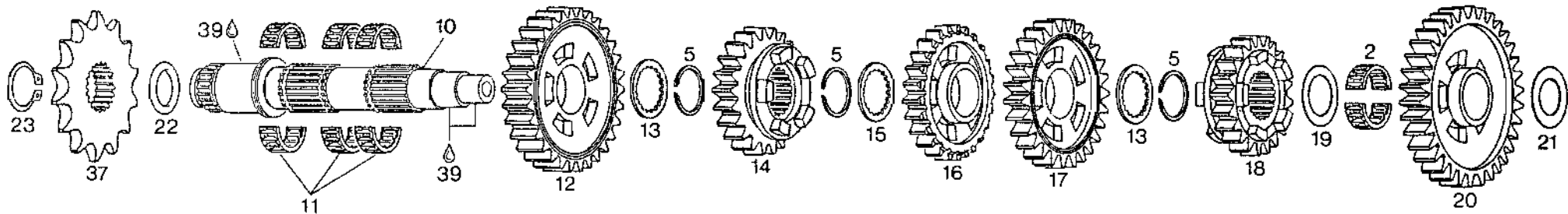


CENTRO RICAMBI^{SRL}

via CIMABUE, 24/A - 50121 FIRENZE (ITALY)
TEL. (+39) 055-66 64 23 - FAX (+39) 055-67 00 84
e-mail: cr1firenze@tiscali.it

BILD-NR. ILL. NO. FIG.	TEILE-NR. PART NO. CODICE	B E Z E I C H N U N G D E S C R I P T I O N D E S C R I Z I O N E	STUECK QTY. QTA.
41	267 991	VERGASERSTUTZEN / CARBURETOR FLANGE FLANGIA CARBURATORE..... FUER MOTORTYPE 123 E N D U R O FOR ENGINE TYPE 123 E N D U R O PER MOTORE TIPO 123 E N D U R O	1
42	840 861	ZYL.SCHRAUBE M6X25 DIN 912 ALLEN SCREW M6X25 / BRUGOLA M6X25.....	5
43	251 850	SCHLAUCHSCHELLE 51 / HOSE CLAMP 51 FASCETTA 51.....	1
44	250 270	DICHTUNG / GASKET / GUARNIZIONE.....	1
45	273 882	AUSPUFFSTUTZEN KPL. EXHAUST SOCKET ASSY., FLANGIA SCARICO CPL.....	1
46	224 067	FEDEREINHAENGUNG / SPRING BRACKET COPRIGIUNTO.....	2
47	240 081	ZYL.SCHRAUBE M8X25 DIN 912 ALLEN SCREW M8X25 / BRUGOLA M8X25..... ANZUGSDREHMOMENT 20 NM TIGHTENING TORQUE 20 NM (175 IN.LB.) COPPIA DI SERRAGGIO 20 NM	2
48	297 431	LOCTITE ANTI-SEIZE 76710 LOCTITE ANTI-SEIZE 10 GR., LOCTITE ANTI-SEIZE 10 GR..... ZUR VERHINDERUNG VON PASSUNGSROST, 10 GR., TO PREVENT METAL GALLING PER EVITARE CORROSIONE	N BED AS REQ A RICH
49	899 788	LOCTITE 648 GRUEN LOCTITE 648 GREEN 5 GR., LOCTITE 648 VERDE, 5 GR..... SCHRAUBENSICHERUNG HOCHFEST, 5 GR., HIGH STRENGTH BOND PASTA FISSAGGIO VITI, FORTE	N BED AS REQ A RICH





6-GANG GETRIEBE 123 E N D U R O U N D S T R A D A
 6-SPEED TRANSMISSION 123 E N D U R O - S T R A D A
 TRASMISSIONE A 6 MARCE 123 E N D U R O-S T R A D A

BILD-NR. ILL. NO. FIG.	TEILE-NR. PART NO. CODICE	B E Z E I C H N U N G D E S C R I P T I O N D E S C R I Z I O N E	STUECK QTY. QTA.
1 - 23	281 180	GETRIEBESATZ 6-GANG 3,56 TRANSMISSION SET 3,56 CAMBIO CPL., 6 MARCE, 3,56.....	1
		FUER MOTORTYPE 123 E N D U R O FOR ENGINE TYPE 123 E N D U R O PER MOTORE TIPO 123 E N D U R O	
1 - 23	281 181	GETRIEBESATZ 6-GANG 3,25 TRANSMISSION SET 6-SPEED 3,25 CAMBIO CPL. 6 MARCE 3,25.....	1
		FUER MOTORTYPE 123 S T R A D A FOR ENGINE TYPE 123 S T R A D A PER MOTORE TIPO 123 S T R A D A	
1	237 970	VORGELEGEWELLE 10 Z / CLUTCH SHAFT 10 T., ALBERO PRIMARIO 10 D.,.....	1
2	232 662	NADELKAEFIG K 20X24X10 NEEDLE BEARING 20X24X10 GABBIA A RULLI 20X24X10.....	3
3	234 886	LOS RAD 22 Z / FREE PINION 22 T., INGRANAGGIO 22 D.,.....	1
		6. GANG, VORGELEGEWELLE-FUER TYPE 123 E N D U R O 6TH SPEED, CLUTCH SHAFT- FOR TYPE 123 E N D U R O 6A VELOCITA, ALBERO PRIMARIO-TIPO 123 E N D U R O	
3	234 520	LOS RAD 22 Z / FREE PINION 22 T., INGRANAGGIO 22 D.,.....	1
		6. GANG, VORGELEGEWELLE-FUER TYPE 123 S T R A D A 6TH SPEED, CLUTCH SHAFT- FOR TYPE 123 S T R A D A 6A VELOCITA, ALB.PRIMARIO-PER TIPO 123 S T R A D A	
4	227 470	ANLAUFSCHIEBE 24,2/27,5/1,5 THRUST WASHER 24,2/27,5/1,5 RASAMENTO 24,2/27,5/1,5.....	1
5	245 340	SPRENGRING 24 / SNAPRING 24 / SEEGER 24..	4
6	235 262	SCHALTRAD 16/19 Z / GEAR PINION 16/19 T., INGRANAGGIO 16/19 D.,.....	1
		4. / 3. GANG, VORGELEGEWELLE 4TH / 3RD SPEED, CLUTCH SHAFT 4A / 3A VELOCITA, ALBERO PRIMARIO	
7	227 440	ANLAUFSCHIEBE 20,2/27,5/1 THRUST WASHER 20,2/27,5/1 RASAMENTO 20,2/27,5/1.....	1

BILD-NR. ILL. NO. FIG.	TEILE-NR. PART NO. CODICE	B E Z E I C H N U N G D E S C R I P T I O N D E S C R I Z I O N E	STUECK QTY. QTA.
8	234 866	LOS RAD 21 Z / FREE PINION 21 T., INGRANAGGIO 21 D.,..... 1 5. GANG, VORGELEGEWELLE-FUER TYPE 123 E N D U R O 5TH SPEED, CLUTCH SHAFT- FOR TYPE 123 E N D U R O 5A VELOCITA, ALBERO PRIMARIO-TIPO 123 E N D U R O	
8	234 500	LOS RAD 21 Z / FREE PINION 21 T., INGRANAGGIO 21 D.,..... 1 5. GANG, VORGELEGEWELLE-FUER TYPE 123 S T R A D A 5TH SPEED, CLUTCH SHAFT- FOR TYPE 123 S T R A D A 5A VELOCITA, ALBERO PRIMARIO-TIPO 123 S T R A D A	
9	234 826	FESTRAD 13 Z / FIXED GEAR 13 T., INGRANAGGIO 13 D.,..... 1 2. GANG, VORGELEGEWELLE 2ND SPEED, CLUTCH SHAFT 2A VELOCITA, ALBERO PRIMARIO	
10	N 237 893	HAUPTWELLE / MAINSHAFT ALBERO SECONDARIO..... 1	
11	232 740	NADELKAEFIG K 21X25X10 NEEDLE BEARING 21X25X10 GABBIA A RULLI 21X25X10..... 3	
12	234 818	LOS RAD 30 Z / FREE PINION 30 T., INGRANAGGIO 30 D.,..... 1 2. GANG, HAUPTWELLE 2ND SPEED, MAINSHAFT 2A VELOCITA, ALBERO SECONDARIO	
13	227 460	ANLAUFSCHEIBE 22/30/1,8 THRUST WASHER 22/30/1,8 RASAMENTO 22/30/1,8..... 2	
14	234 878	SCHALTRAD 23 Z / GEAR PINION 23 T., INGRANAGGIO 23 D.,..... 1 5. GANG, HAUPTWELLE - FUER TYPE 123 E N D U R O 5TH SPEED, MAINSHAFT - FOR TYPE 123 E N D U R O 5A VELOCITA, ALBERO SECOND.-TIPO 123 E N D U R O	
14	234 510	SCHALTRAD 24 Z / GEAR PINION 24 T., INGRANAGGIO 24 D.,..... 1 5. GANG, HAUPTWELLE - FUER TYPE 123 S T R A D A 5TH SPEED, MAINSHAFT - FOR TYPE 123 S T R A D A 5A VELOCITA, ALBERO SECOND.-TIPO 123 S T R A D A	
15	227 490	WINKELRING 22/30/2,8 ANGULAR RING 22/30/2,8 ANELLO ANGOLARE 22/30/2,8..... 1	



CENTRO RICAMBI SRL

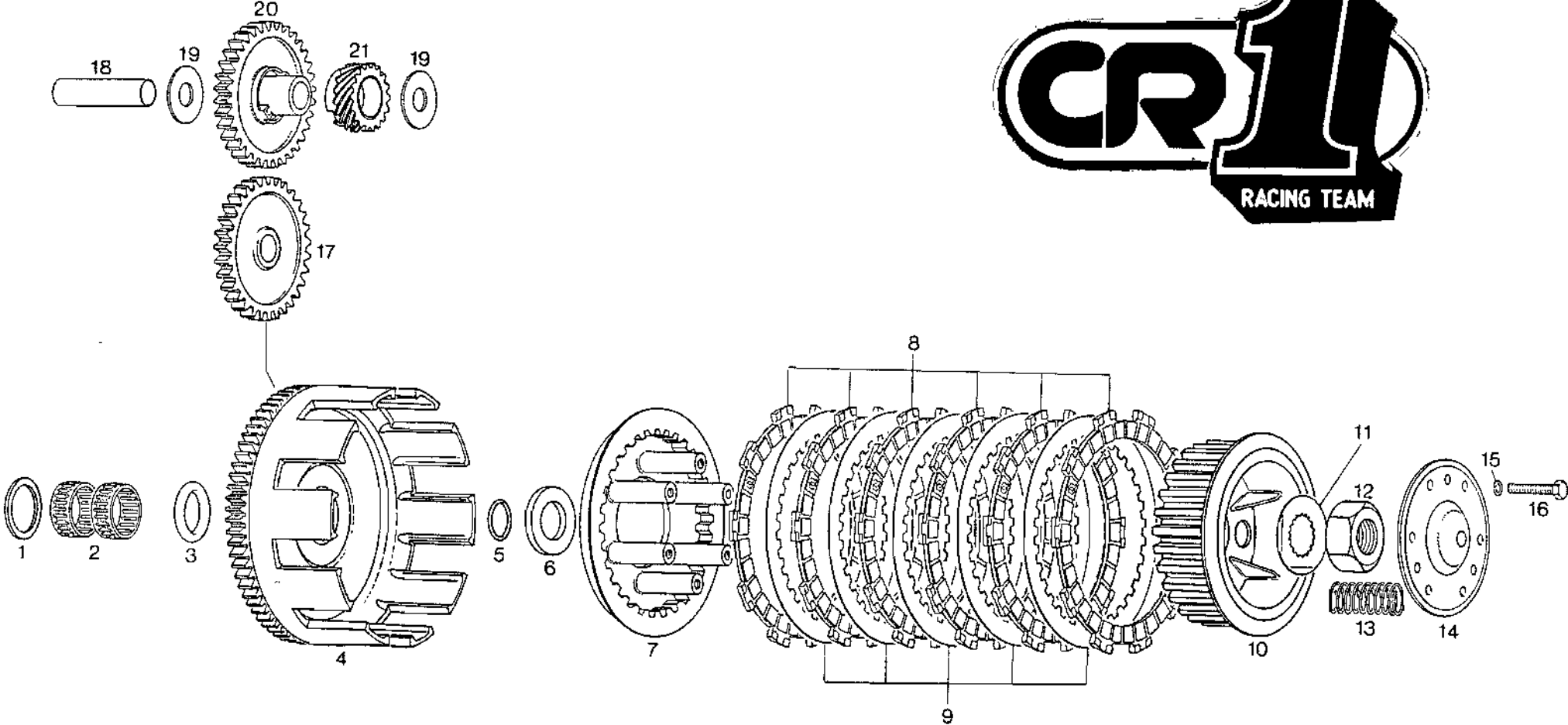
via CIMABUE, 24/A - 50121 FIRENZE (ITALY)
TEL. (+39) 055-66 64 23 - FAX (+39) 055-67 00 84
e-mail: cr1firenze@tiscali.it

BILD-NR. ILL. NO. FIG.	TEILE-NR. PART NO. CODICE	B E Z E I C H N U N G D E S C R I P T I O N D E S C R I Z I O N E	STUECK QTY. QTA.
16	234 858	LOSRAD 25 Z / FREE PINION 25 T., INGRANAGGIO 25 D.,..... 4. GANG, HAUPTWELLE 4TH SPEED, MAINSHAFT 4A VELOCITA, ALBERO SECONDARIO	1
17	234 838	LOSRAD 27 Z / FREE PINION 27 T., INGRANAGGIO 27 D.,..... 3. GANG, HAUPTWELLE 3RD SPEED, MAINSHAFT 3A VELOCITA, ALBERO SECONDARIO	1
18	234 993	SCHALTRAD 21 Z / GEAR PINION 21 T., INGRANAGGIO 21 D.,..... 6. GANG, HAUPTWELLE - FUER TYPE 123 E N D U R O 6TH SPEED, MAINSHAFT - FOR TYPE 123 E N D U R O 6A VELOCITA, ALBERO SECOND.- TIPO 123 E N D U R O	1
18	234 530	SCHALTRAD 23 Z / GEAR PINION 23 T., INGRANAGGIO 23 D.,..... 6. GANG, HAUPTWELLE - FUER TYPE 123 S T R A D A 6TH SPEED MAINSHAFT - FOR TYPE 123 S T R A D A 6A VELOCITA, ALBERO SECOND.-TIPO 123 S T R A D A	1
19	944 468	ANLAUFSSCHEIBE 20,5/30/1 THRUST WASHER 20,5/30/1 RASAMENTO 20,5/30/1.....	1
20	234 808	LOSRAD 34 Z / FREE PINION 34 T., INGRANAGGIO 34 D.,..... 1. GANG, HAUPTWELLE 1ST SPEED, MAINSHAFT 1A VELOCITA, ALBERO SECONDARIO	1
21	227 437	ANLAUFSSCHEIBE 17,2/30/2 THRUST WASHER 17,2/30/2 RASAMENTO 17,2/30/2.....	1
22	430 460	O-RING 18-3,5 NBR 70-80 SH O-RING 18-3,5 / ANELLO OR 18-3,5.....	1
23	245 650	SEEGER-V-RING AV 20 RETAINING RING AV 20 / SEEGER AV 20.....	1
24	237 925	SCHALTWELLE MIT KLINKE KPL. SHIFT SHAFT WITH PAWL ASSY., ALBERO SELETTORE CON ARPIONISMO.....	1
25	239 830	KLINKENFEDER / SPRING / MOLLA.....	1
26	248 255	INDEXHEBEL KPL. / INDEX LEVER ASSY., LEVA INDEX CPL.,.....	1

BILD-NR. ILL. NO. FIG.	TEILE-NR. PART NO. CODICE	B E Z E I C H N U N G D E S C R I P T I O N D E S C R I Z I O N E	STUECK QTY. QTA.
27	827 261	ANLAUFSSCHEIBE 12,5/21,5/1 THRUST WASHER 12,5/21,5/1 RASAMENTO 12,5/21,5/1.....	1
28	239 820	INDEXFEDER / INDEX SPRING / MOLLA INDEX..	1
29	239 645	HAARNADELFEDER / HAIR PIN SPRING / MOLLA.	1
30	247 690	DISTANZHUELSE / DISTANCE SLEEVE BUSSOLA DISTANZIALE.....	1
31	227 430	ANLAUFSSCHEIBE 17,2/30/1 THRUST WASHER 17,2/30/1 RASAMENTO 17,2/30/1.....	1
32	258 935	SCHALTWALZE KPL. / SHIFT DRUM ASSY., DESMODROMICO CPL.,.....	1
33	258 900	SCHALTGABEL / SHIFT FORK FORCHETTA CAMBIO..... 2. / 4. GANG 2ND / 4TH SPEED 2A / 4A VELOCITA	1
34	258 910	SCHALTGABEL / SHIFT FORK FORCHETTA CAMBIO..... 5. / 6. GANG 5TH / 6TH SPEED 5A / 6A VELOCITA	1
35	258 890	SCHALTGABEL / SHIFT FORK FORCHETTA CAMBIO..... 1. / 3. GANG 1ST / 3RD SPEED 1A / 3A VELOCITA	1
36	258 880	SCHALTSTANGE / GUIDE PIN / ASTA FORCHETTA	1
37	236 061	KETTENRAD 14 Z SPROCKET 14 T., 5/8X1/4X10,16 PIGNONE 14 D., 5/8X1/4X10,16..... SERIENMAESSIG BEI TYPE 123 E N D U R O MONTIERT MOUNTED AS STANDARD AT ENGINE TYPE 123 E N D U R O QUESTO PEZZO E MONTATI STAND. TIPO 123 E N D U R O	1
37	236 063	KETTENRAD 16 Z SPROCKET 16 T., 5/8X1/4X10,16 PIGNONE 16 D., 5/8X1/4X10,16..... SERIENMAESSIG MONTIERT BEI TYPE 123 S T R A D A MOUNTED AS STANDARD AT ENGINE TYPE 123 S T R A D A MONTATI STANDARD PER MOTORE TIPO 123 S T R A D A	1
37	236 062	KETTENRAD 15 Z SPROCKET 15 T., 5/8X1/4X10,16 PIGNONE 15 D., 5/8X1/4X10,16.....	1

BILD-NR. ILL. NO. FIG.	TEILE-NR. PART NO. CODICE	B E Z E I C H N U N G D E S C R I P T I O N D E S C R I Z I O N E	STUECK QTY. QTA.
38	248 230	FUSSSCHALTHEBEL.KPL. / SHIFT LEVER ASSY. LEVA CAMBIO CPL..... 1 NUR FUER MOTORTYPE 123 E N D U R O FOR ENGINE TYPE 123 E N D U R O ONLY SOLO PER MOTORE TIPO 123 E N D U R O	
39	297 431	LOCTITE ANTI-SEIZE 76710 LOCTITE ANTI-SEIZE 10 GR., LOCTITE ANTI-SEIZE 10 GR.,..... A RICH ZUR VERHINDERUNG VON PASSUNGSROST, 10 GR., TO PREVENT METAL GALLING PER EVITARE CORROSIONE	N BED AS REQ
40	897 330	LITHIUMSEIFENFETT LITHIUM-BASE GREASE, 250 GR., GRASSO LITHIUM, 250 GR.,..... A RICH 250 GR.,	N BED AS REQ





KUPPLUNG, DREHZAehlerANTRIEB
CLUTCH, REVOLUTION COUNTER DRIVE
FRIZIONE, COMANDO CONTAGIRI

FUER AUSFUEHRUNG E - S T A R T E R
FOR E L E C T R I C S T A R T E R C O N F I G U R A T I O N
PER ESECUZIONE A V V I A M E N T O
E L E T T R I C O

BILD-NR. ILL. NO. FIG.	TEILE-NR. PART NO. CODICE	B E Z E I C H N U N G D E S C R I P T I O N D E S C R I Z I O N E	STUECK QTY. QTA.
1	427 460	STUETZSCHEIBE 25X35X2 DIN 988 THRUST WASHER 25X35X2 / RASAMENTO 25X35X2	1
2	232 650	NADELKAEFIG K 25X29X10 NEEDLE BEARING 25X29X10 GABBIA A RULLI 25X29X10.....	2
3	250 360	O-RING 35,2-5,7 NBR 70-80 SH O-RING 35,2-5,7 / ANELLO OR 35,2-5,7.....	1
4	293 925	PRIMAERTRIEB KPL. / PRIMARY DRIVE ASSY., TRASMISSIONE PRIMARIA CPL..... NUR ANTRIEBSRAD MIT KUPPLUNGSKORB KPL. GEMEINSAM AUSTAUSCHEN REPLACE ONLY DRIVE GEAR WITH CLUTCH DRUM ASSY., CAMBIARE SOLO L'INGRANAGGIO E LA CAMPANA FRIZIONE INSIEME	1
5	230 400	O-RING 18-1,5 NBR 70-80 SH O-RING 18-1,5 / ANELLO OR 18-1,5.....	1
6	227 600	ANLAUFSSCHEIBE 20,2/35/3 THRUST WASHER 20,2/35/3 RASAMENTO 20,2/35/3.....	1
7	259 570	STUETZTELLER / INNER PRESSURE PLATE PIATTO PORTAMOLLE.....	1
8	N 259 052	BELAGLAMELLE 3,0 MM FRICTION PLATE 3,0 MM DISCO FRIZIONE GUARNITO 3,0 MM.....	6
9	259 557	INNENLAMELLE / CLUTCH PLATE 1 MM DISCO FRIZIONE 1 MM.....	5
10	259 060	MITNEHMER / CLUTCH HUB / MOZZO FRIZIONE..	1
11	245 320	SICHERUNGSBLECH NA20 / TAB WASHER NA20 RONDELLA SICUREZZA NA20.....	1

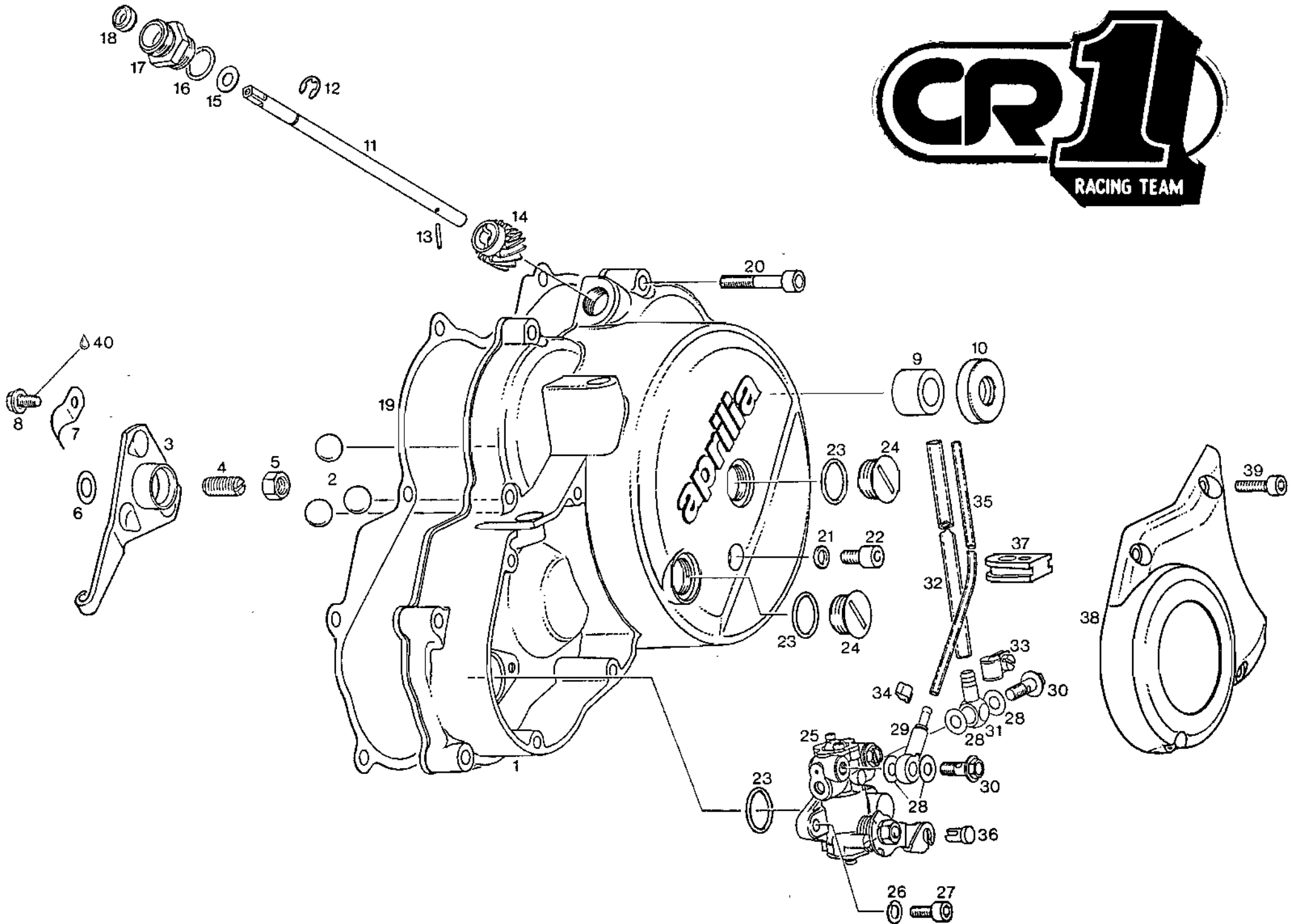


CENTRO RICAMBI ^{SRL}

via CIMABUE, 24/A - 50121 FIRENZE (ITALY)
TEL. (+39) 055-66 64 23 - FAX (+39) 055-67 00 84
e-mail: cr1firenze@tiscali.it

BILD-NR. ILL. NO. FIG.	TEILE-NR. PART NO. CODICE	B E Z E I C H N U N G D E S C R I P T I O N D E S C R I Z I O N E	STUECK QTY. QTA.
12	242 605	SK-MUTTER M18X1,5 / HEX. NUT M18X1,5 DADO M18X1,5..... ANZUGSDREHMOMENT 80 NM TIGHTENING TORQUE 80 NM COPPIA DI SERRAGGIO 80 NM	1
13	239 620	KUPPL.FEDER DM14,3 D2,1 L36,7 CLUTCH SPRING 36,7 MM MOLLA FRIZIONE 36,7 MM..... FEDERN NUR SATZWEISE WECHSELN CHANGE SPRINGS ONLY SETWISE CAMBIARE SOLO TUTTA LA SERIE	6
14	259 165	DRUCKPLATTE KPL. / RETAINING PLATE ASSY., PIATTO DI SPINTA CPL.,.....	1
15	945 750	FEDERRING DIN 128-A5-FST / LOCK WASHER A5 RONDELLA SPACCATA A5.....	6
16	241 770	SK-SCHRAUBE M5X25 DIN 933 HEX. SCREW M5X25 / VITE ESAGONALE M5X25..	6
17	234 470	DREHZAehlerZWISCHENRAD 31 Z IDLER GEAR 31 T. INGRANAGGIO INTERMEDIO 31 D.....	1
18	247 712	DISTANZROHR 12,4/14/55,6 SPACER 12,4/14/55,6 TUBO DINSTANZIALE 12,4/14/55,6.....	1
19	227 980	ANLAUFSCHIEBE 12,2/29,5/1 THRUST WASHER 12,2/29,5/1 RASAMENTO 12,2/29,5/1.....	2
20	234 482	DREHZAehlerANTRIEBSRAD 31 Z DRIVE GEAR 31 T., / INGRANAGGIO 31 D.,....	1
21	234 232	SCHRAUBENRAD 19 Z / HELICAL GEAR 19 T. INGRANAGGIO CONTAGIRI 19 D.....	1





KUPPLUNGSDECKEL, MECH. DREHZAehler, OELPUMPE
 CLUTCH COVER, MECH. REVOLUTION COUNTER, OIL PUMP
 COPERCHIO FRIZIONE, CONTAGIRI MECC., POMPA OLIO

BILD-NR. ILL. NO. FIG.	TEILE-NR. PART NO. CODICE	B E Z E I C H N U N G D E S C R I P T I O N D E S C R I Z I O N E	STUECK QTY. QTA.
1	N 210 302	KUPPLUNGSDECKEL / CLUTCH COVER, BEIGE COPERCHIO FRIZIONE, BIGIO..... BEIGE	1
2	232 150	KUGEL DIN 5401-12 MM III / BALL 12 MM SFERA 12 MM.....	3
3	N 259 180	AUSRUECKTELLER 23 GRAD RELEASE CAM, 23 DEGREE CHIOCCIOLA, 23 GRADI.....	1
4	241 791	GEWINDESTIFT M8X16 ADJUSTMENT SCREW M8X16 / VITE M8X16.....	1
5	942 671	SK-MUTTER M8 SW 11 / HEX. NUT M8 DADO ESAGONALE M8.....	1
6	N 227 945	ANLAUFSSCHEIBE 8,1/15/0,5 THRUST-WASHER 8,1/15/0,5 RASAMENTO 8,1/15/0,5.....	1
7	239 905	BLATTFEDER / LEAF SPRING / MOLLA.....	1
8	841 680	TAPTITE-SCHRAUBE M5X8 TAPTITE SCREW M5X8 / VITE TAPTITE M5X8...	1
9	233 572	LAGERBUECHSE 12X20X13,9 BUSHING 12/20/13,9 / BUSSOLA 12/20/13,9..	1
10	250 450	WD-RING AS 12X28X7 NBR / OIL SEAL 12X28X7 PARAOLIO 12X28X7.....	1
11	237 845	ANTRIEBSWELLE / DRIVE SHAFT ALBERINO CONTAGIRI.....	1
12	945 710	SICHERUNGSSCHEIBE 5 DIN 6799 RETAINING RING 5 / SEEGER 5.....	1
13	932 740	NADELROLLE 2X11,8 G2 DIN 5402 NEEDLE PIN 2X11,8 / GRAND 2X11,8.....	1
14	234 220	SCHRAUBENRAD 14 Z / GEAR 14 T. INGRANAGGIO 14 D.....	1
15	244 211	SCHEIBE 6,4 DIN 134 / WASHER 6,4 RONDELLA 6,4.....	1

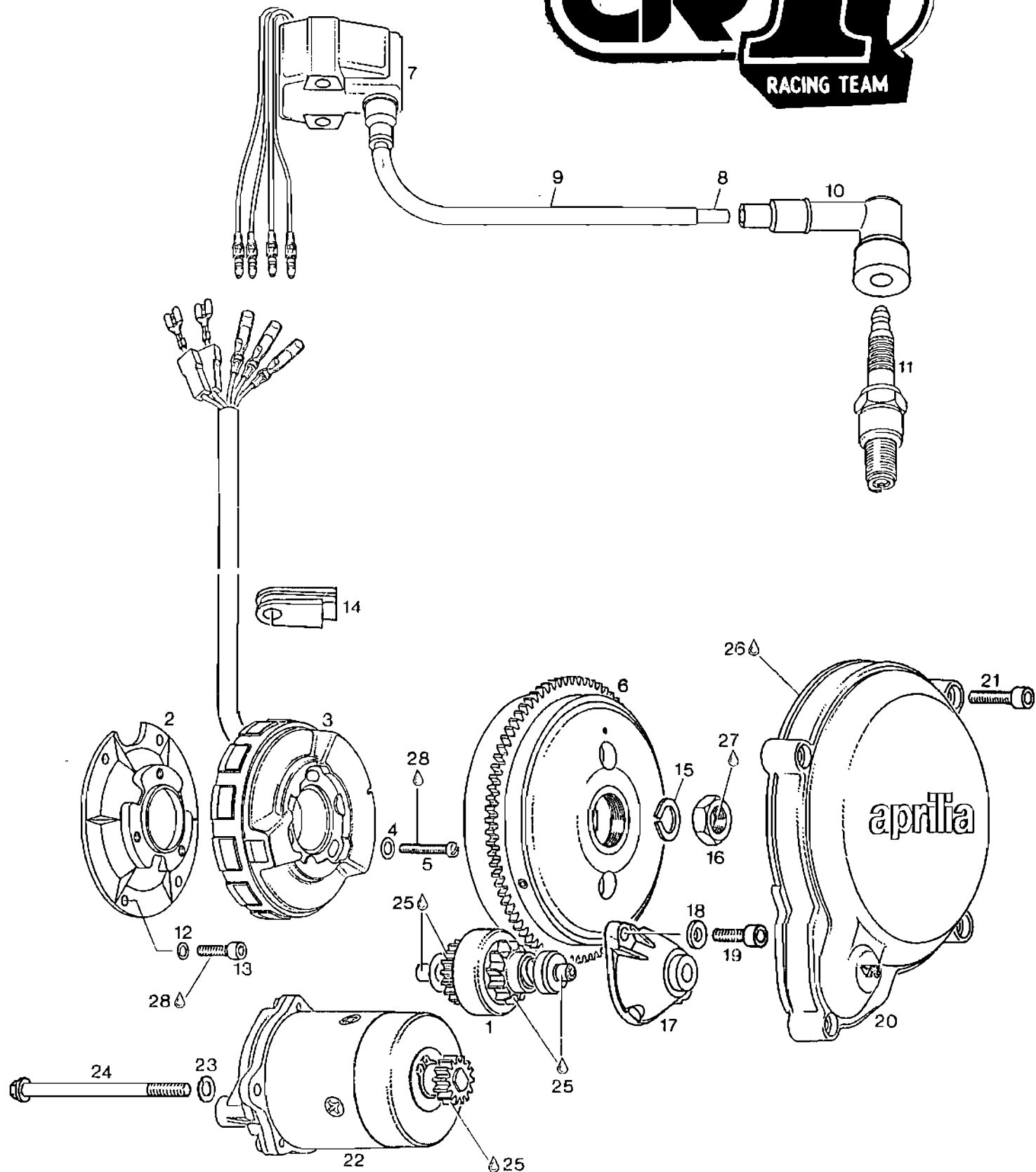
BILD-NR. ILL. NO. FIG.	TEILE-NR. PART NO. CODICE	B E Z E I C H N U N G D E S C R I P T I O N D E S C R I Z I O N E	STUECK QTY. QTA.
16	430 600	O-RING 12-1,5 NBR 70-80 SH O-RING 12-1,5 / ANELLO OR 12-1,5.....	1
17	241 070	HOHLSCHRAUBE / BANJO BOLT / RACCORDO.....	1
18	930 500	WD-RING AOF 6X11X3/4,5 NBR OIL SEAL 6X11X3/4,5 / PARAOLIO 6X11X3/4,5	1
19	250 200	DICHTUNG / GASKET / GUARNIZIONE.....	1
20	241 811	ZYL.SCHRAUBE M6X35 DIN 912 ALLEN SCREW M6X35 / BRUGOLA M6X35.....	11
21	830 890	DICHTRING 6,2/8,9/1 GASKET RING 6,2/8,9/1 ANELLO GUARNIZIONE 6,2/8,9/1.....	1
22	840 371	ZYL.SCHRAUBE M6X11,5 ALLEN SCREW M6X11,5 / BRUGOLA M6X11,5.....	1
23	230 400	O-RING 18-1,5 NBR 70-80 SH O-RING 18-1,5 / ANELLO OR 18-1,5.....	3
24	241 800	VERSCHLUSSSCHRAUBE M18X1,5 PLUG SCREW M18X1,5 TAPPO PLASTICO M18X1,5.....	2
25	N 293 198	OELPUMPE KPL. / OIL PUMP ASSY., POMPA OLIO CPL.....	1
26	945 750	FEDERRING DIN 128-A5-FST / LOCK WASHER A5 RONDELLA SPACCATA A5.....	2
27	840 510	ZYL.SCHRAUBE M5X16 DIN 912 ALLEN SCREW M5X16 / BRUGOLA M5X16.....	2
28	227 500	DICHTRING 6,2/12/1 / GASKET RING 6,2/12/1 RONDELLA GUARNIZIONE 6,2/12/1.....	4
29	956 015	RUECKSCHLAGVENTIL KPL. CHECK VALVE ASSY., VALVOLA DI NON-RITORNO CPL.....	1
30	241 830	HOHLSCHRAUBE M6X16 / BANJO BOLT M6X16 VITE M6X16.....	2
31	256 020	SCHLAUCHNIPPEL 5 MM / BANJO 5 MM RACCORDO MM 5.....	1
32	256 037	OELLEITUNG 850 MM / OIL LINE 850 MM TUBO 850 MM.....	1
33	951 591	KLEMMSCHELLE 7 / CLAMP 7 / FASCETTA 7.....	1

BILD-NR. ILL. NO. FIG.	TEILE-NR. PART NO. CODICE	B E Z E I C H N U N G D E S C R I P T I O N D E S C R I Z I O N E	STUECK QTY. QTA.
34	853 840	2-OHR-KLEMME 3-5 MM / CLAMP 3-5 MM FASCETTA MM 3-5.....	2
35	860 231	OELLEITUNG 250 MM / OIL LINE 250 MM TUBO OLIO 250 MM.....	1
36	297 340	NIPPEL / NIPPLE / BOCCIOLO.....	1
37	260 830	OELLEITUNGSTUELLE / GROMMET GOMMINO FILO.....	1
38	N 210 322	OELPUMPENDECKEL / OIL PUMP COVER, BEIGE COPERCHIO POMPA OLIO, BIGIO.....	1
39	240 181	ZYL.SCHRAUBE M5X20 DIN 912 ALLEN SCREW M5X20 / BRUGOLA M5X20.....	4
40	899 785	SCHRAUBENSICHERUNG NIEDRIGFEST LOCTITE 221 VIOLET 10 CC., LOCTITE 221 VIOLETT, 10 CC.,..... LOCTITE 221 VIOLETT, 10 CCM., LOW STRENGTH BOND 10 CCM PASTA FISSAGGIO VITI, DEBOLE	N BED AS REQ A RICH



CR1

RACING TEAM

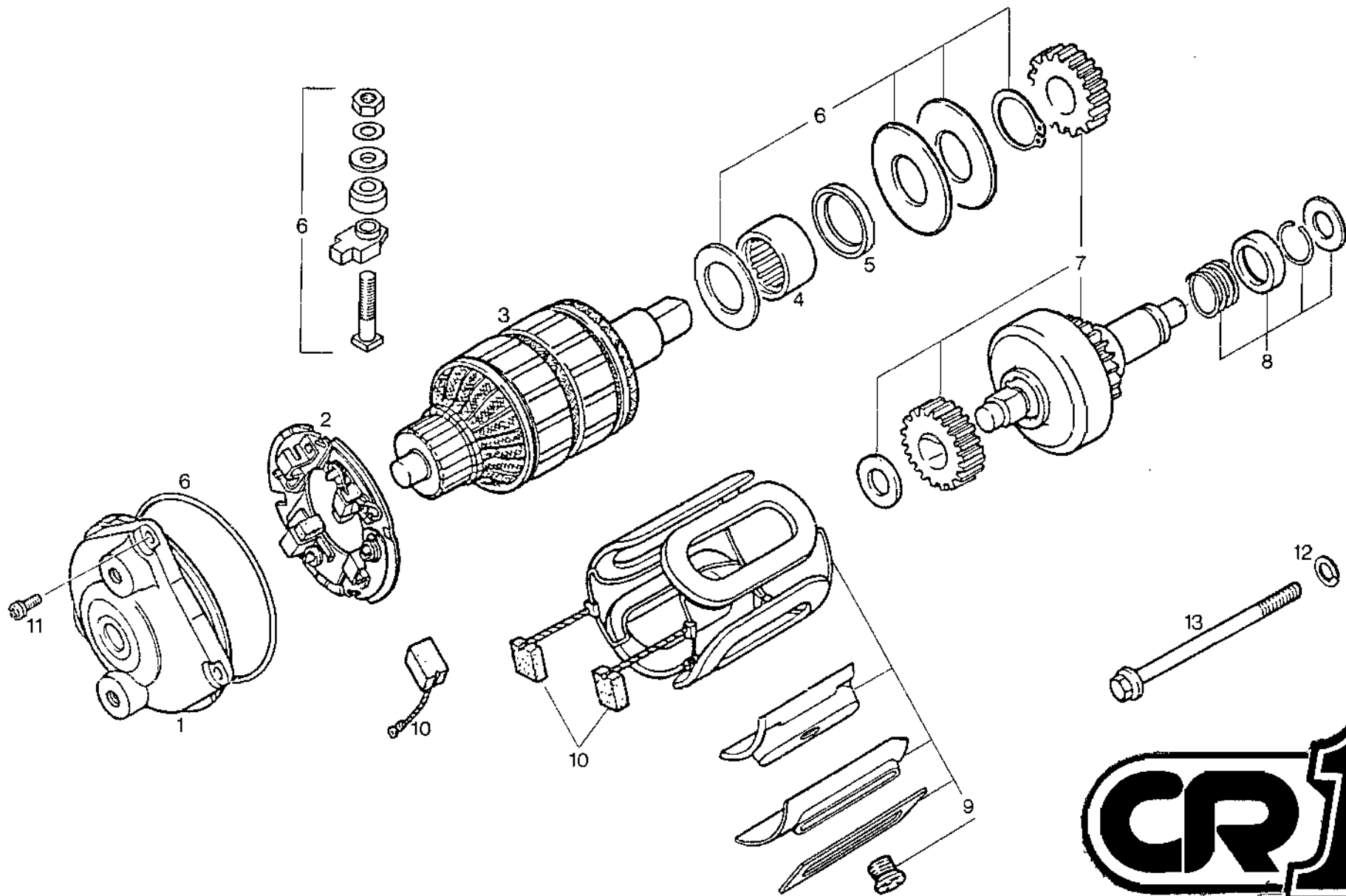


SEM MAGNETZUENDER-GENERATOR, ELEKTROSTARTER,
ZUENDERDECKEL
SEM MAGNETO GENERATOR, ELECTRIC STARTER, IGNITION
COVER
ACCENSIONE SEM, MOTORINO D'AVVIAMENTO, COPERCHIO
VOLANO

M I T A U T O M. Z U E N D V E R S T E L L U N G
W I T H A U T O M. S P A R K A D V A N C E
C O N A N T I C I P O A U T O M A T I C O

BILD-NR. ILL. NO. FIG.	TEILE-NR. PART NO. CODICE	BEZEICHNUNG DESCRIPTION DESCRIZIONE	STUECK QTY. QTA.
1	293 690	STARTERGETRIEBE KPL. STARTER GEAR ASSY., / RINVIO CPL.,.....	1
2 - 10	N 294 451	MZ-GENERATOR WG MAGNETO GENERATOR WG ASSY., ACCENSIONE WG CPL.,.....	1
2	265 965	ANKERPLATTE / STATOR PLATE PIATTO STATORE.....	1
3	N 293 377	STATOR WG / STATOR WG ASSY., STATORE WG CPL.,.....	1
4	927 571	SCHEIBE 5,3 DIN 125 / WASHER 5,3 RONDELLA 5,3.....	3
5	241 591	ZYL.SCHRAUBE M5X30 DIN 84 SLOTTED HEAD SCREW M5X30 VITE TONDA M5X30.....	3
6	293 367 z 63	MAGNETRAD KPL. / MAGNETO FLYWHEEL ASSY., VOLANO MAGNETO CPL.....	1
7	N 265 987	ZUENDSPULE WG / IGNITION COIL WG BOBINA ACCENSIONE WG.....	1
8	964 180	ZUENDLEITUNG 200 MM IGNITION CABLE 200 MM FILO CANDELA MM 200.....	1
9	260 434	ISOLIERSCHLAUCH 140 MM PROTECTION HOSE 140 MM GUAINA IMPIANTO 140 MM.....	1
10	866 705	WIDERSTANDSSTECKER / SPARK PLUG CONNECTOR CAPPUCCIO CANDELA.....	1
11	899 477	ZUENDKERZE 14 NGK B10EG SPARK PLUG 14 MM NGK B10 EG CANDELA 14 MM NGK B10 EG.....	1

BILD-NR. ILL. NO. FIG.	TEILE-NR. PART NO. CODICE	B E Z E I C H N U N G D E S C R I P T I O N D E S C R I Z I O N E	STUECK QTY. QTA.
12	945 750	FEDERRING DIN 128-A5-FST / LOCK WASHER A5 RONDELLA SPACCATA A5.....	4
13	240 150	ZYL.SCHRAUBE M5X14 DIN 6912 ALLEN SCREW M5X14 / BRUGOLA M5X14.....	4
14	260 840	LEITUNGSTUELLE / GROMMET / GOMMINO FILO..	1
15	945 754	FEDERRING DIN 128-A12-FST LOCK WASHER A12 / RONDELLA SPACCATA A12..	1
16	642 051	SK-MUTTER M12X1 HOEHE 6 / HEX. NUT M12X1 DADO M12X1..... ANZUGSDREHMOMENT 70 NM TIGHTENING TORQUE 70 NM COPPIA DI SERRAGGIO 70 NM	1
17	210 340	STARTERGETRIEBEDECKEL ELECTRIC STARTER COVER COPERCHIO MOTORINO D' AVVIAMENTO.....	1
18	244 930	TELLERSCHEIBE 6,2/12,5/2,5 PLATE WASHER 6,2/12,5/2,5 RONDELLA ELASTICA 6,2/12,5/2,5.....	2
19	241 930	ZYL.SCHRAUBE M6X20 DIN 912 ALLEN SCREW M6X20 / BRUGOLA M6X20.....	2
20	N 210 312	ZUENDERDECKEL / IGNITION COVER, BEIGE COPERCHIO ACCENSIONE, BIGIO..... BEIGE BEIGE BIGIO	1
21	840 861	ZYL.SCHRAUBE M6X25 DIN 912 ALLEN SCREW M6X25 / BRUGOLA M6X25.....	4
22	293 685	SCHRAUBTRIEB-STARTERMOTOR KPL. ELECTRIC STARTER ASSY., MOTORINO D'AVVIAMENTO ELETTRICO.....	1
23	945 751	FEDERRING DIN 128-A6-FST / LOCK WASHER A6 RONDELLA SPACCATA A6.....	2
24	241 301	BUNDSCHRAUBE M6X90 / HEX. SCREW M6X90 VITE M6X90.....	2
25	897 161	MOLYKOTE 111 MOLYKOTE 111, 100 GR., MDLYKOTE 111, 100 GR.,..... 100 GR.,	N BED AS REQ A RICH



EINZELTEILE VON E-STARTER 293 685
 SINGLE PARTS OF ELECTRIC STARTER 293 685
 PEZZI AVVIAMENTO ELETTRICO 293 685

BILD-NR. ILL. NO. FIG.	TEILE-NR. PART NO. CODICE	B E Z E I C H N U N G D E S C R I P T I O N D E S C R I Z I O N E	STUECK QTY. QTA.
1	264 010	KOLLEKTORLAGER / ROTOR SUPPORT SUPPORTO ROTORE.....	1
2	264 030	KOHLEBUERSTENHALTER KPL. CARBON BRUSH HOLDER ASSY., PORTASPAZZOLE CPL.,.....	1
3	264 050	ANKER / ROTOR / ROTORE.....	1
4	232 460	NADELHUELSE 16X22X8,5 NEEDLE BUSHING 16X22X8,5 GABBIA A RULLI 16X22X8,5.....	1
5	250 350	WD-RING 16X22X3 / OIL SEAL 16X22X3 PARAOLIO 16X22X3.....	1
6	264 070	KLEINTEILESATZ / PARTS SET SERIE PEZZETTI.....	1
7	293 890	STARTERGETRIEBE KPL. STARTER GEAR ASSY., / RINVIO CPL.,.....	1
8	264 060	RITZELFEDERSATZ / SPRING SET SERIE MOLLA, ROSETTA, ANELLO.....	1
9 - 10	264 040	WICKLUNG M. KOHLEBUERSTEN KPL. FIELD COIL W. CARBON BRUSH ASSY. CAMPO INDUTTORE CPL.,.....	1
10	264 045	KOHLEBUERSTE / CARBON BRUSH SPAZZOLA CARBONE.....	4
11	241 215	KOMBISCHRAUBE M4X10 COMBINED SCREW M4X10 / VITE M4X10.....	3
12	945 751	FEDERRING DIN 128-A6-FST / LOCK WASHER A6 RONDELLA SPACCATA A6.....	2
13	241 301	BUNDSCHRAUBE M6X90 / HEX. SCREW M6X90 VITE M6X90.....	2



CENTRO RICAMBI SR.

via CIMABUE, 24/A - 50121 FIRENZE (ITALY)
 TEL. (+39) 055-66 64 23 - FAX (+39) 055-67 00 84
 e-mail: cr1firenze@tiscali.it